



Established Since
1948

Syarikat
ONG YOKE LIN Sdn. Bhd.

翁毓麟有限公司

Company No. 4724 - D

Equipment & Tools Hook Up



Contributing towards Industrialization Era

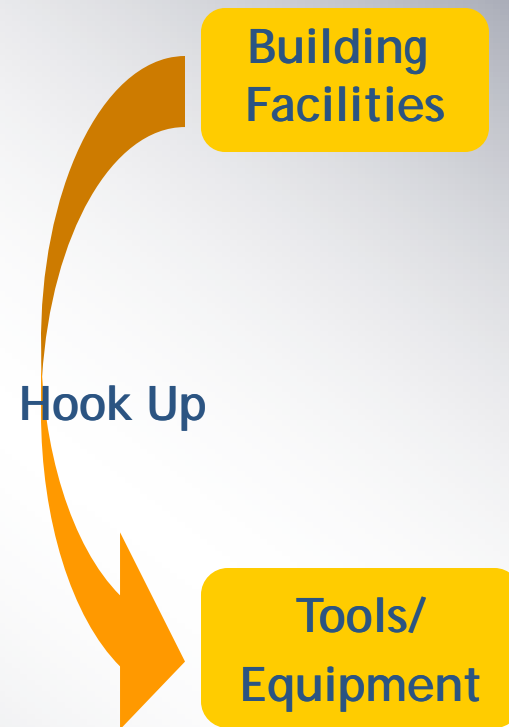
Content

1. What is Hook Up
2. Why Us
3. What Can You Expect From Us
4. What Have We Done In The Past

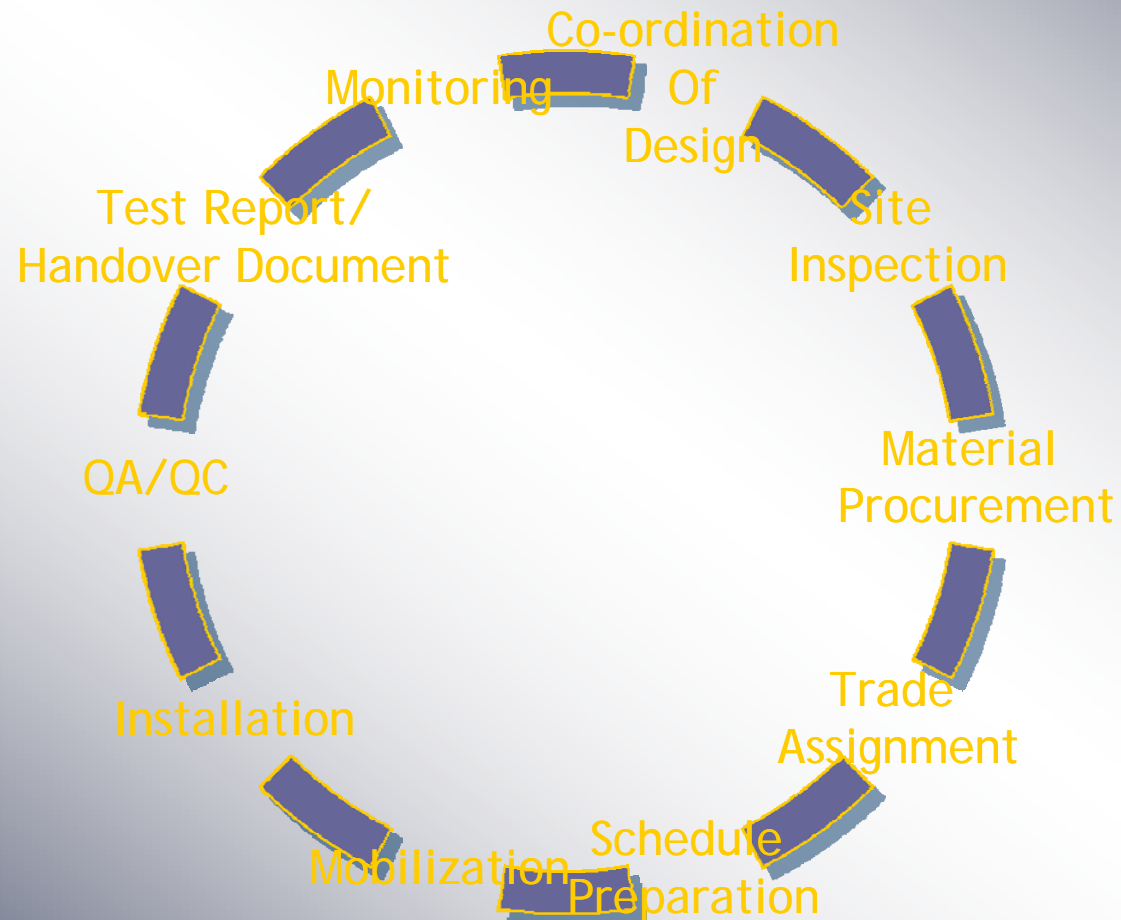
1. What is Hook Up

Hook Up

Hook-up which includes assembly and connection of production equipment, including all related consequences and adaptations to civil, mechanical and electrical installations, and complete documentation of all works in a structured way. Hook up is the bridge between building facilities and equipment/tools in order to enable the equipment/tools functional.



Hook-Up Process Construction



2. Why Us

*We form a vital backbone for regional growth through specialization
in engineering processes & services*



Syarikat Ong Yoke Lin, established in Malaysia in 1948, is specializes in industrial engineering services.

We are primarily focused on providing premium engineering services to a wide variety of industries. Offering turnkey solutions ranging from consultation, detailed designs / drawing, to installation, service and maintenance. Syarikat Ong Yoke Lin is committed to serve customer needs via product leadership and operational excellence.

We can execute small or large projects and provide stand alone services or integrated packaged solutions in full flexibility to meet your needs. Our integrated solutions build constructability, validity, maintainability, and regulatory compliance into each project phase and significantly shorten the length of a typical project schedule.

Key Success factors

- We have many years of experience in semiconductor industry and an understanding of what it takes to maintain competitive yields of our customers. With our well trained and experienced personnel we are able to manage your projects world-wide.
- In order to compete effectively in domestic and global market, the following issues are considered as Key Factors:
 - - Time optimisation
 - Low cost position through high productivity and lean organisation
 - Value added services
 - Distribution network
 - Professional image
 - Technical support and back up services

Our Ability & Strength

- We are experience in general contractor work and able to handle work including civil & electrical hook up work.
- We have extensive experience in shutdown work which required detail time & resources management.
- We are one of the few contractors who are able to perform hot tapping work which is a highly specialize scope of work.
- We are familiar with Intel requirement such as QAQC process, SIPP signing process, OAC meeting preparation and others documentation requirement.
- As a establish contractor, we do have our own safety department which oversee project safety & conduct training from time to time.

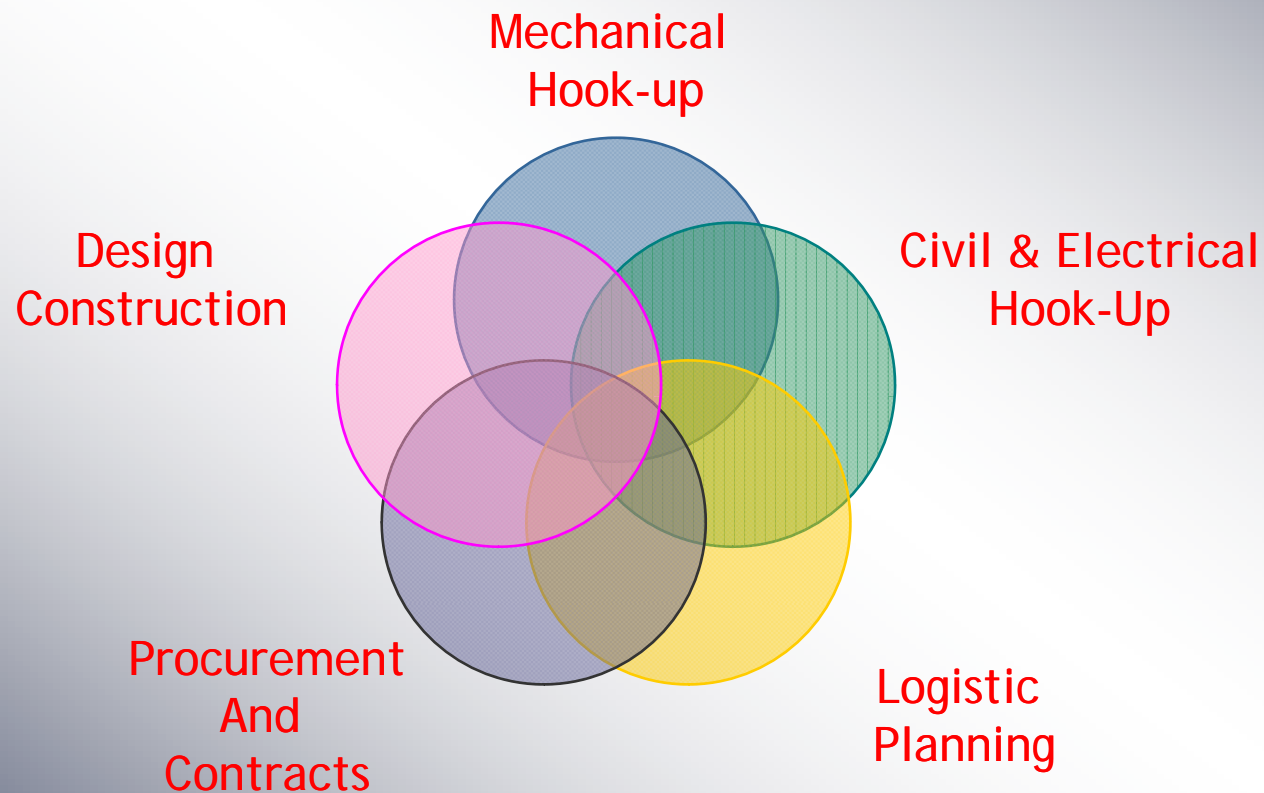
Our Ability & Strength

- We provide integrated solution for hook up work which includes:-
 - Project management
 - Status reports & meeting
 - Cost estimation
 - Time schedule
 - Manpower planning
 - Material sourcing
 - Hook up database & drawing updating
 - Testing & commissioning
 - Fit up preparation work for machine hook up.

- In our past project, we could even provide alternative solution to overcome material shortage and time limitation problem thanks to our extensive experience and related knowledge in the work.

3. What Can You Expect From Us

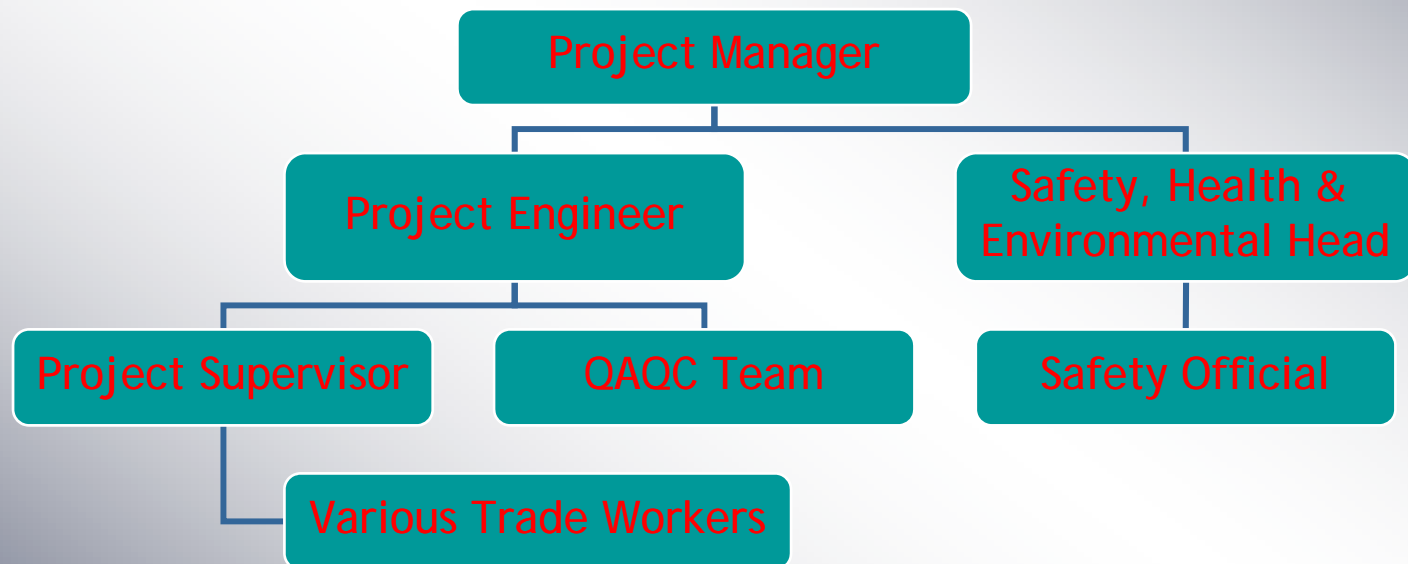
One Stop Hook Up Solution Provider



- Depending on the tools/equipment and plant requirement, we are able to provide installation for the below system:

- Process Cooling Water
- Process Vacuum
- Compressed Air
- Process Exhaust
- Bulk Gas such as Nitrogen and Hydrogen
- RODI Water
- Process Drain
- Electrical Services
- Architectural and Structural

Hook Up Team Organization Chart



4. What Have We Done In The Past

References

Machine Hook Up Project

INTEL MALAYSIA

- o PG7 FCBGA Link 10th - 13th Tool Install
- o PG7 PCO
- o PG7 FCBGA Link 7th Tool Install
- o PG8 ST2/PPV Base Build, Fit Up & Hook Up Work
- o PG8 INT2 Tools Install Project
- o PG8 Q2'02 Progressive Build Phase 2
- o PG8 WMT PPV Tool Install
- o PG8 ST2 Tool Install
- o PG8 IHS Link Tool Install
- o PG12 ITTO Lab Set Up Project
- o KM1 FCBGA 2 Phase 1
- o KM2 MB FCM Line 1, 2, 3 & 4
- o KM2 Server Line
- o PG6 CMT Machine Hook Up

Solectron Technology Sdn. Bhd.

SMCI

References

Machine Being Hook Up

- APL
- Auto PPV
- ATC
- Ball Attach
- Blu Oven
- Blue M Oven
- Bump Reflow
- Carousel
- CTL
- Despatch Oven
- Die Plate
- Fico
- FX Tester
- GX Tester
- Kokusai Vertical
- Laser Mark
- LSC Module
- IHS Attach
- IHS Cure Oven
- IPA Module
- MTS

References

Machine Being Hook Up

- MVI Module
- NGBI
- NGCAM
- OLF
- PEVI
- RVS1
- SCAM
- SMS Module
- SRM
- Strata Pack
- ST 495
- ST 595
- ST2 Tester
- SVS Module
- Systest
- Teradyne Tester (J973)
- Trilium
- Triton-X Mix Station
- Vertical WIP Carousel
- Wafer Saw 200mm
- Wafer Saw 300mm
- Wafer Mount



Syarikat Ong Yoke Lin Sdn Bhd (Co.No. 4724-D)

Head Quarter (Project & Admin Department):

135, Jalan SS 15/5A, Subang Jaya, 47500 Petaling Jaya.

Tel: +603 - 5636 3000

Fax: +603 - 5636 5138

Head Quarter (Service Department):

7, Jalan Serindit 3, Bandar Puchong Jaya, 47100 Selangor

Tel: +603 - 5636 3000

Fax: +603 - 5636 5138

Penang Branch :

21, Tingkat Bukit Jambul, Bukit Jambul Indah, 11950, Bayan Lepas,

Penang, Malaysia

Tel : +604 - 646 6008

Fax : +604 - 646 2518

Perak Branch :

1B, Jalan Temenggong, 31650 Ipoh Perak.

Tel : +605 - 253 6215

Fax : +605 - 253 8268

Johor Branch :

4, Jalan Molek 2/3, Taman Molek, 81100 Johor Baru.

Tel : +607 - 353 9553

Fax : +607 - 353 9552



WEB SITE: www.soyl.com.my