



Syarikat Ong Yoke Lin Sdn Bhd

Safety Management System



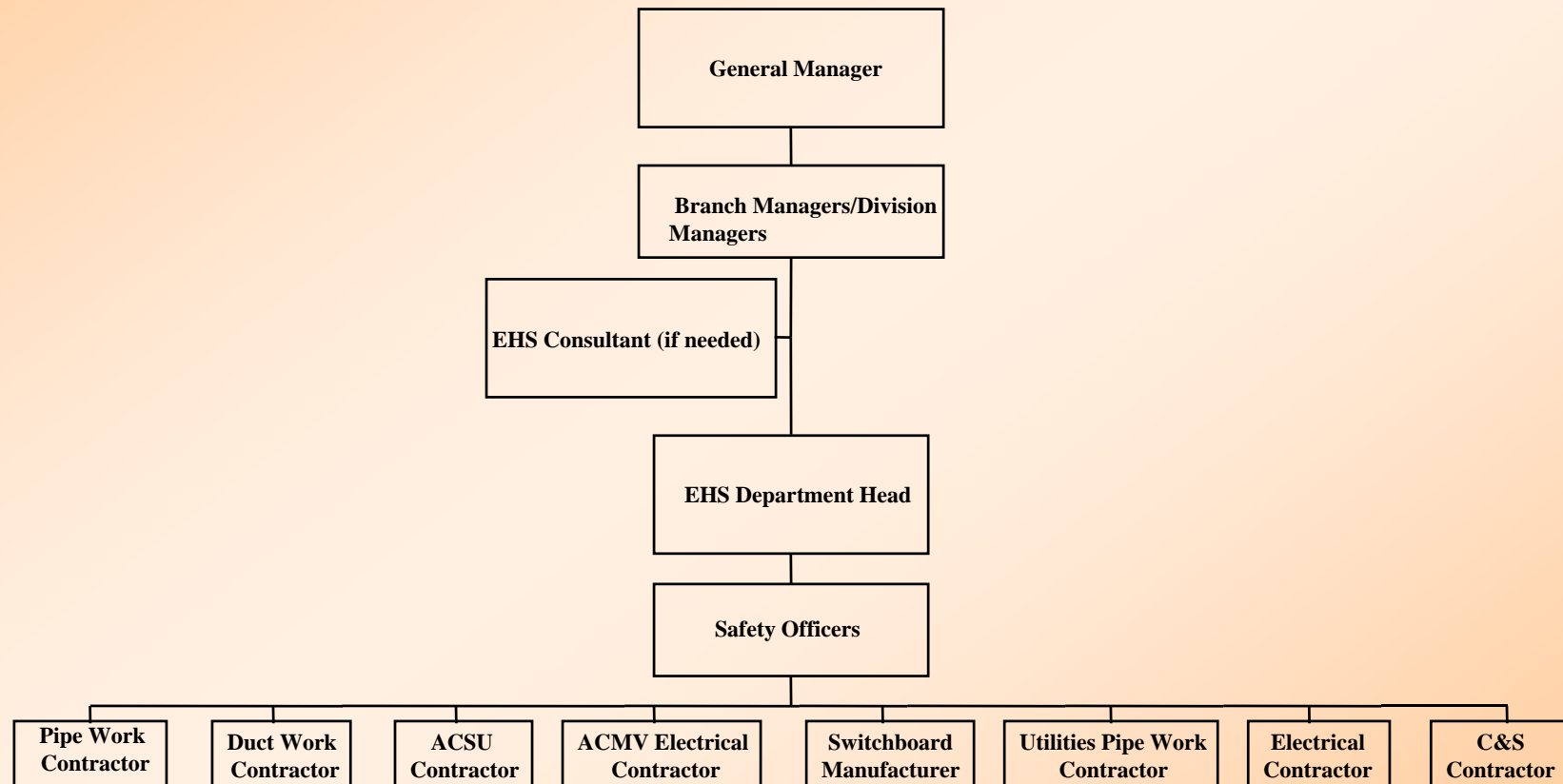
Agenda

- Safety Policy**
- Safety Organization Structure**
- Management Commitment**
- Safety Programs**
- Safety Training**



Safety, Health and Environmental Policy

Safety Organization Structure





Management Commitment

- **Established EHS Department**
 - **A numbers of EHS officers to enforce the site safety**
 - **Attended Safety & Health Officer course**
- **Allocate Resources to Cater for EHS Requirement**
 - **Provide all necessary personal protective equipment for workers' safety protection**



Management Commitment

- **Financial Support**
 - **Yearly budget for safety & health implementation**
- **Role Model in Safety**
 - **Leading a team for sub-contractor's safety & health issues**



Safety Program

- **Develop site safety guidelines**
 - **Minimum safety guidelines for workers to follow**
 - **Reviewing the guidelines annually**

- **Monthly management safety meeting**
 - **A communication channel to discuss on safety concerned issues**



Safety Program

- **Daily Toolbox Meeting/Incidents Sharing**
 - **Chaired by SHO or Supervisor**
 - **Two ways communication channel**

- **Daily Site Inspection**
 - **Daily safety checklist conducted by the SHO**
 - **Rectify the problem immediately**



Safety Program

- **Workers recognition for best practices**
 - **Monthly incentives give away for outstanding safe practice**

- **Safety Violation Program**
 - **Penalty for any unsafe practice**

- **Accident and Incident Reporting**
 - **Emphasize in root cause finding**
 - **Prevention of similar occurrence in the future**

Safety Training- Continual Improvement

- Internal:-

- In house specific training for workers and supervisor
- Safety Induction Training
- Task specific training
- :- the proper usage of PPE, Permit To Work System etc

Safety Training- Continual Improvement

■ Internal:-

- Contractor Safety Passport System Training for all level of workers
 - Topic covered mechanical work safety

- Refresher Training
 - Conduct refresher training annually

Safety Training- Continual Improvement

■ External:-

- SHO Course by NIOSH
 - All SHO attended Safety & Health Officer Course by NIOSH

- First Aid by Consultant
 - Trained by the certified consultant for basic first aid

- Frame Type of Scaffold
 - All engineers, supervisors and safety officers are competent

Safety Training- Continual Improvement

■ External:-

- Tubular Type of Scaffold
 - All engineers, supervisors and safety officers are competent

- ERT by Consultant
 - Trained by certified consultant in emergency response plan



Zero Accident is Our Ultimate Goal